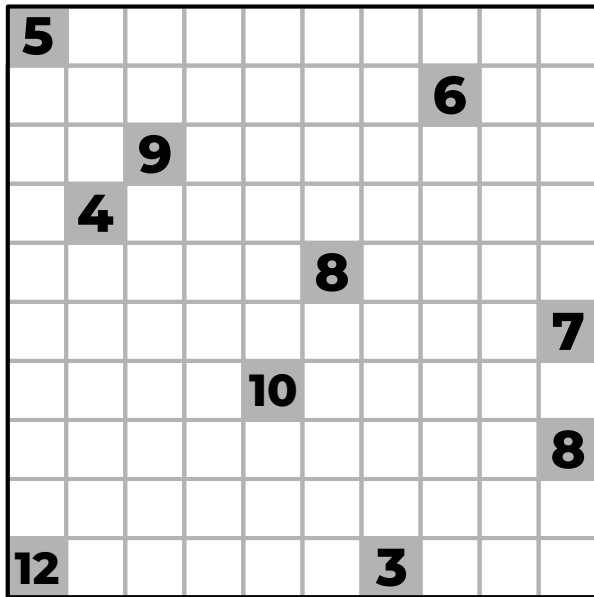


# PUZZLEBOMB



## ARMS

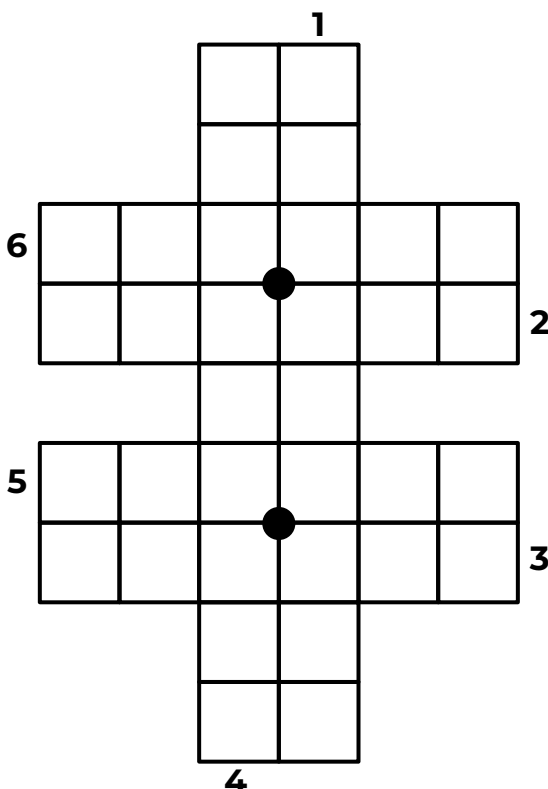
Draw one or more arms extending up, down, left or right from each of the numbered squares in the grid.

Each number is the total number of squares occupied by that square's arm(s) (not including the numbered square itself).

No square contains multiple arms, and an arm cannot belong to two of the numbered squares.

# SLINGSHOT

Each answer starts at its number and may slingshot round one or both of the dots by any amount (including not at all), all ending at different outside cells.



1. Frequency charts
2. They're often pending
3. Lecture aggressively
4. Novel with subtitle 'The Modern Prometheus'
5. Mixed-breed
6. Tiny tree

## SET PIECES

Split the words into 3 groups of 3, so that the concepts connecting each group also have a connection.

**amis brusque**  
**crumbly kemp kiss**  
**lawrence light**  
**paper steeple**